

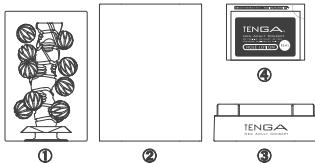
# crysta

## User Manual

### Product Content

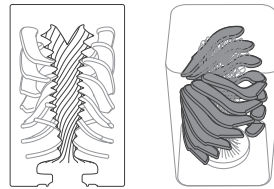
- ① Product ② Top Cover  
③ Drying Case ④ Sample Lotion

※ We recommend the TENGA HOLE LOTION Series (sold separately) for further uses of the crysta.



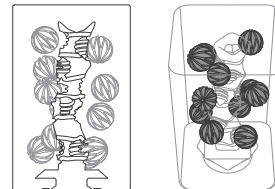
### Product Lineup

#### Leaf [CRY-001]



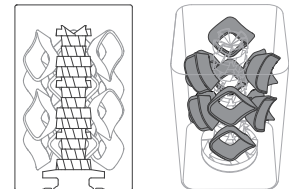
Congruous floating leaves  
for pleasure in waves!

#### Ball [CRY-002]



Dynamic floating balls  
for pleasure in motion!

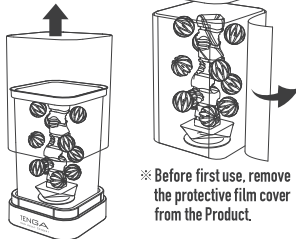
#### Block [CRY-003]



Encompassing floating blocks  
for pleasure on impact!

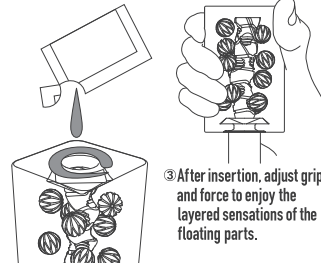
### How to Use

- ① Remove Top Cover and take Product from Case.



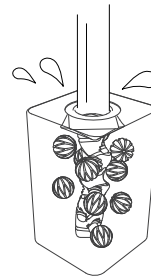
※ Before first use, remove the protective film cover from the Product.

- ② With the insertion hole facing up, lubricate the inside and insertion point of the Product to prepare for use.



③ After insertion, adjust grip and force to enjoy the layered sensations of the floating parts.

### How to Wash

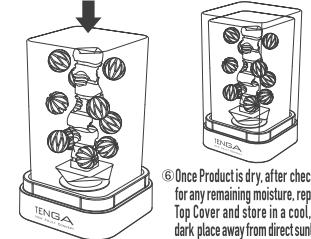


- ④ After use, wash thoroughly with running water.

※ Product cannot be turned inside out. Do not attempt to invert, as this may result in product damage.

### How to Store

- ⑤ Place the clean item on the Drying Case in a well-ventilated area to air dry.



⑥ Once Product is dry, after checking for any remaining moisture, replace Top Cover and store in a cool, dry, dark place away from direct sunlight.

### TENGA HOLE LOTION Series (Sold Separately)

The crysta is best used with TENGA HOLE LOTION Series.



**MILD**  
Delicately enveloping lubrication MILD

**WILD**  
Direct stimulation for a feeling that's WILD

**REAL**  
Lubrication that feels REAL

**SOLID**  
Feel each SOLID edge!

※ Tester lotion is a single-use amount of HOLE LOTION [REAL].

### Warning

Do not use on damaged, irritated or otherwise abnormal skin. If you experience any discomfort or irritation, stop use immediately and consult a medical professional. After use, ensure no lotion or other fluids remain on the item by washing thoroughly with tepid water and mild soap, and ensure product is completely dry before storing. Do not wash with alcoholic cleaners, or corrosive substances such as benzene or paint thinner. This may damage the item. Silicone-based / oil-based lubricants / other oils such as massage oil or baby oil may cause damage to the product material. Lotion may leak during use. Please ensure you use the item on a surface where this can occur. Do not boil. Store at cool to room temperature. Keep away from the reach of children. Do not place near nose or mouth to avoid suffocation risk. Do not

use in any way other than stated on this User Manual. Do not share this product with others to prevent risk of STIs. Do not use this product if it is damaged in any way. TENGA Co., Ltd. can not be held liable if used in any way other than that stated in this User Manual. Use at own risk. Included lotion only intended for use with this product. Not intended for use in sexual intercourse.

DESIGN PATENT PENDING MADE IN JAPAN  
Manufactured by TENGA Co., Ltd.  
1-7-1 Mita, Minato, Tokyo 108-0073, JAPAN.  
TENGA Europe GmbH - Immermannstr. 15. 40210  
Düsseldorf, GERMANY  
For more information, please visit: [tenga.co](http://tenga.co)

- Materials: PE / PC / Elastomer
- Dimensions (mm) / W57×D57×H90
- Weight: Leaf - Approx: 220g  
Ball - Approx: 220g  
Block - Approx: 220g