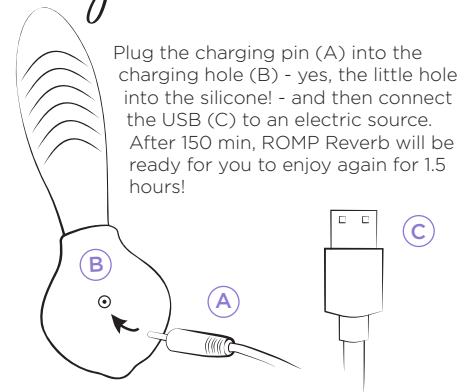


Charge

ROMP Reverb needs a power-up?



Light blinking:
Charging



Light on:
Fully charged

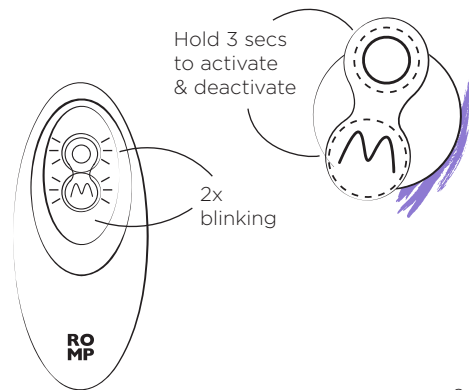


Light off:
No power or charger is not properly placed.

7

Travel lock

Hold both buttons for 3 seconds to activate and deactivate the travel lock. The toy will buzz twice and the LED light will flash twice to indicate that the travel lock has been activated. Charging the toy will also deactivate the travel lock.



8

General Content



Scan to access
The Playbook in
multiple languages!

Content of Delivery ROMP Reverb dual stimulator,
USB charging cable, Quick start guide, Safety
information

Delivery does not contain AC adapter

9

WOW Tech Europe GmbH
Hermann-Blankenstein-Str. 5
10249 Berlin, Germany

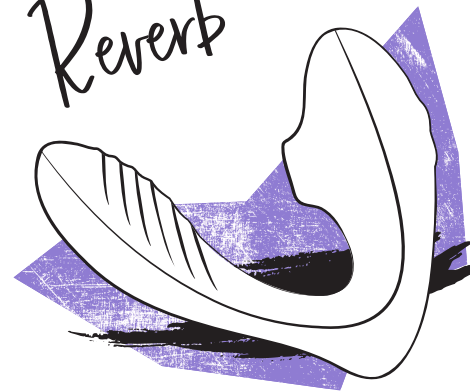
Customer Care
care@romp.toys
www.romp.toys

Designed in Germany.

Date of issue: 12/2022



ROMP Reverb



The Playbook
Quick Start Guide

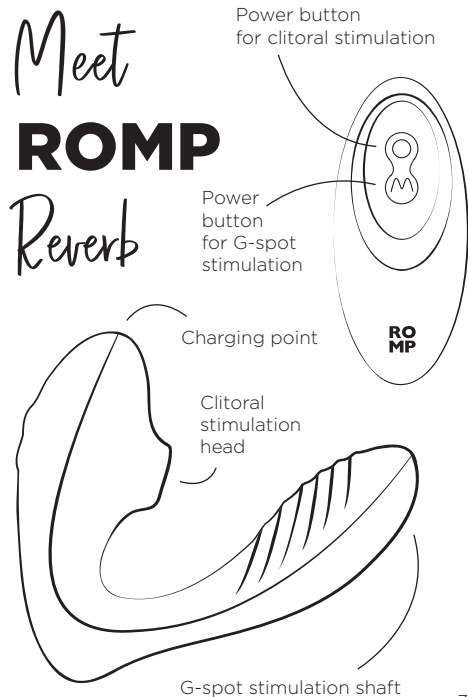
10

Contents of the Playbook

Please read the safety instructions in the Compliance & Safety Information before first use.

Meet ROMP Reverb	3
Enjoy	4
Play Ideas	5
Clean	6
Charge	7
Travel Lock	8
General Content	9

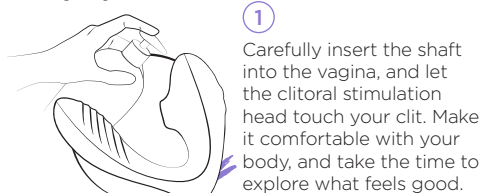
Meet ROMP Reverb



3

Enjoy

We recommend applying water-based lube onto the G-spot stimulation shaft, as well as onto your clit.

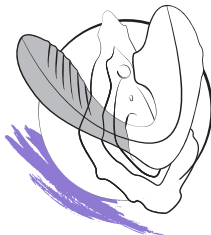


1

Carefully insert the shaft into the vagina, and let the clitoral stimulation head touch your clit. Make it comfortable with your body, and take the time to explore what feels good.

2

Hold the upper button for 2 secs to turn on the clitoral stimulator, and press it repeatedly to run through the 10 suction speeds.



3

Hold the lower button for 2 secs to turn on the G-spot stimulator, and press it repeatedly to run through the 3 speeds and 7 vibration patterns.

4

Holding each button for 2 secs will switch off your toy.

4

Play ideas

ROMP Reverb is designed to be played with, whether it's a gentle tease or an earth-shaking climax...

Try these play ideas to get you in the mood...

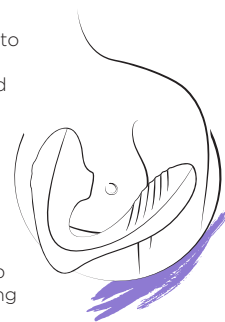


1

Play with ROMP Reverb around the vulva and on the clit to build up tension before going all in!

2

Use your ROMP Reverb to stimulate nipples and inner thighs to tease and tantalize your partner - or yourself.



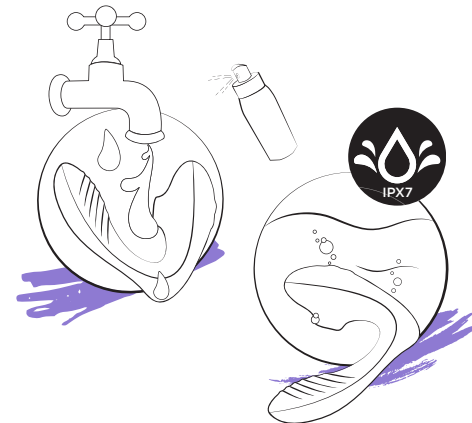
3

Try giving your lover a slow, sensual massage - then using ROMP Reverb to provide a happy ending they'll never forget.

5

Clean

ROMP Reverb is waterproof and submersible. You can clean it with warm water and toy cleaner, or go and take a bath with it - whichever is more fun! You can also clean the stimulation head with a cotton swab.



6